

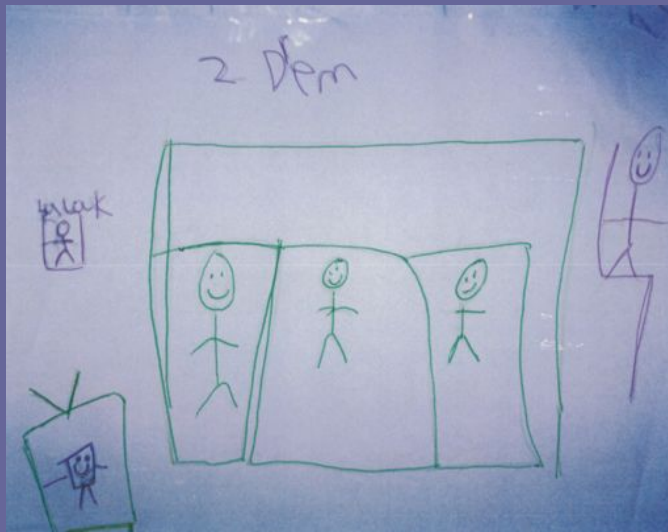
- individual living allows isolation & lost
 opportunity for growth -
 - every thing is so nice you want to keep
 it nice
 - please to put things away - i.e. closet - storage
 - model really nice college dorms - at home
 - Great to be able to take things bedding - fresh sheets
 - not being alone helps feel safer
 - all needs are met - showers, etc
 - communal living = welcoming + orientation
 - "Visitor at our house" rules - not more than
 you'd expect in own house
 - scale - 3 families work

3



Kids under the age of 10
 got prizes for their
 participation in the focus
 group.

4



This child's drawing of shelter shows a mom and two kids in bed watching TV; someone outside the room, perhaps an advocate, in a chair, and the small image on the left is someone at a locked door. The title is "2 Drem" or "To Dream"



6



Security and Safety

11



Security cameras outside helped residents feel safe

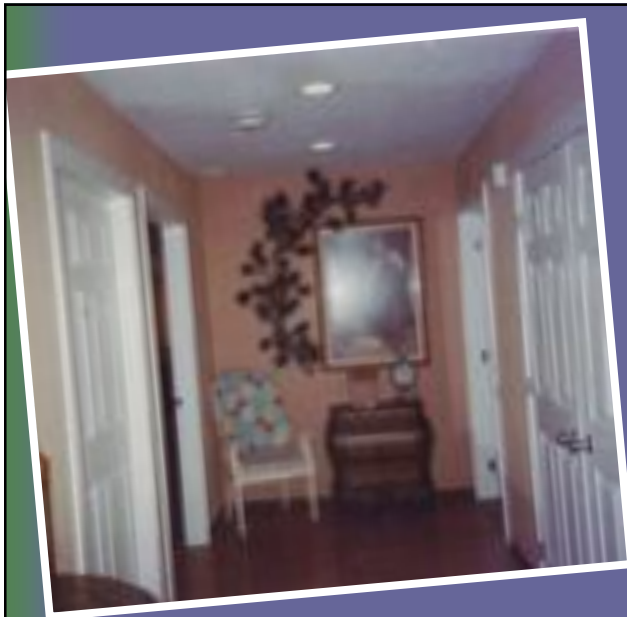


12



Security system = a feeling of safety

13



The entry hall serves as a “filter” from the outside world both literally and figuratively.

A second locked door keeps intruders out of living spaces even if they get into this hall.

It provides a peaceful, welcoming calm space as one enters the shelter.

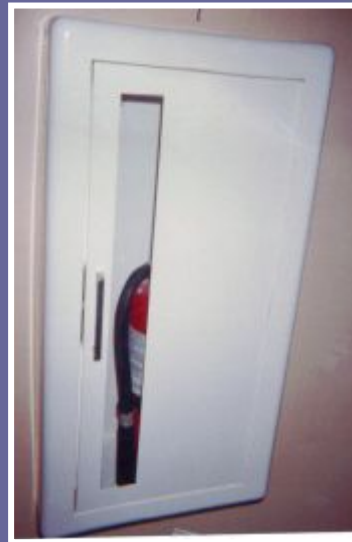
14



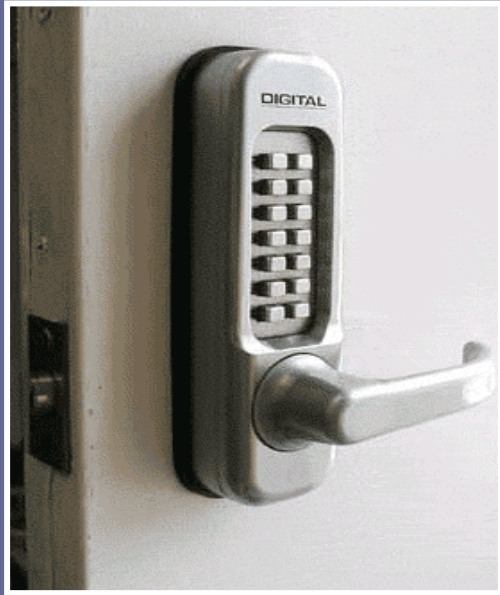
Middle of nowhere

15

This fire extinguisher evoked a sense of safety for residents; it symbolized the thoughtfulness around safety they felt present in the shelter.



16



Combination
locks on the
doors to
bedrooms

17

Inspiration and Beauty

18



Women appreciated that the artwork depicted peaceful scenes, mothers and children, and women in peaceful or empowered settings.

19



Every adult resident spoke about loving the inspiring words throughout the space.

Imagine Blessings Believe

20



These stones in the entry hall have inspiring words on them like:

Patience
Strength
Gratitude
Peace

21



Window treatments... residents appreciate even small simple efforts to create beauty.

22

Information
=
Inspiration



23



24

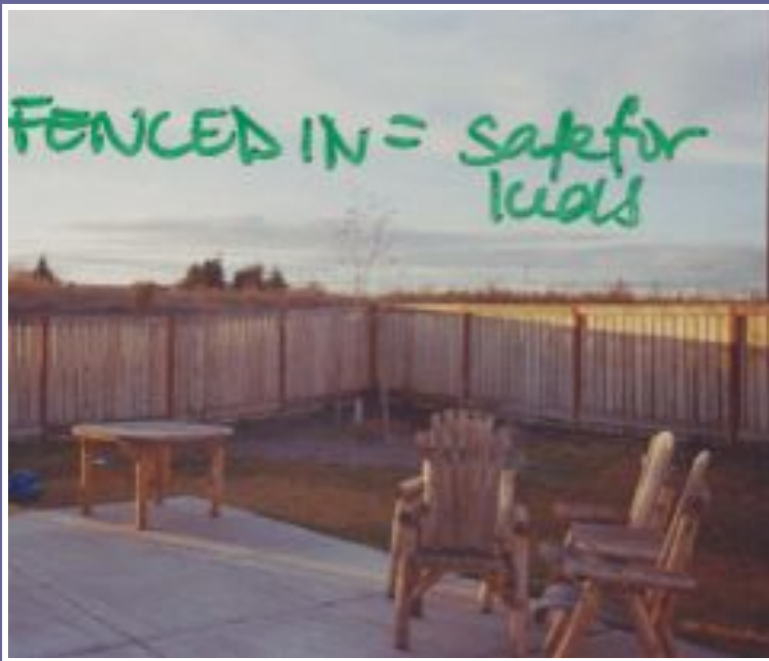
Child Friendly

= parent friendly

25



26





Some residents liked having an indoor play-space for kids right off the living room (but people with older children or no children didn't .)29



Almost every child in one program took a picture of this little girl; she was a neighbor staying in housing subsidized for formerly homeless families.



"I like it [the bunk bed] backwards so kids don't fall"

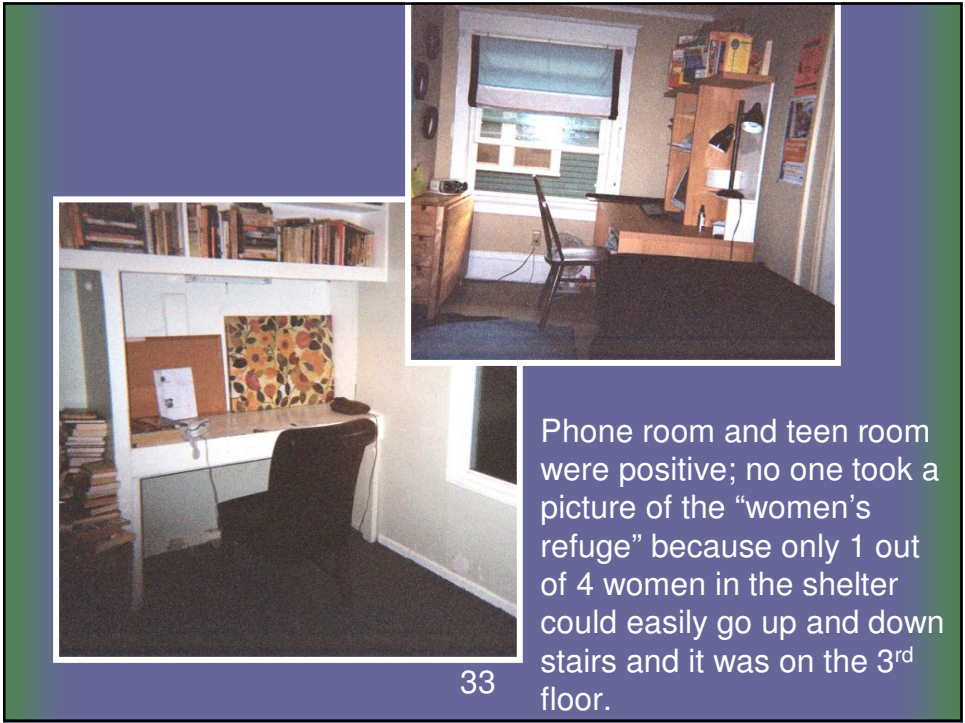
A child wrote her concerns on her picture. I was struck by how much issues of physical safety and vulnerability were on children's minds.

31

Space and Privacy

To get work done, connect with children or an advocate, reflect

32



Phone room and teen room were positive; no one took a picture of the “women’s refuge” because only 1 out of 4 women in the shelter could easily go up and down stairs and it was on the 3rd floor.

33



The quiet room contains padded furniture, carpets, peaceful art, and a telephone. Adults and children highlighted this space as a place to “get away” from stress, do homework, make a private phone call, connect with a child, read or write.

34



35

Something to Do

For moms and kids

36



Adults and children took pictures of TVs; both those in private rooms and in communal areas

37



38



Children and adults appreciated a closet well stocked with art and craft supplies



39

A compact stereo system that could play radio, tapes, CDs and plug into an mp3 player was a popular “like” photo at one shelter.





Games help parents have a positive interaction with children

41

Outdoor Spaces

For people of all ages

42



43





45

Gathering Spaces

For family and with other residents

46



Residents liked this comfy living room set up but also found it somewhat small. Two spaces like this might have been ideal. 48



Space to eat as a family or with other residents

49



The kitchen opens up on the living room; allowing supervision and socializing

50

Getting Basic Needs Met

51



Adults and children both highlighted liking the availability of fresh fruit (and candy).



52

Extra linens easily available



53

Residents were grateful to be provided with food and plenty of it, including fresh fruits and vegetables. No one had a problem with the pantry being locked.

Managing Communal Living

Minimize conflicts

55



In this program, each family has an individual, locking refrigerator in the kitchen. The kitchen also contained a large refrigerator/freezer.

56

Easy to clean
stove



57



Bear, duck, and deer footprints lead to themed bedrooms and to individual refrigerators and cupboards. Both moms and kids pointed this out as a favorite feature.

These signal pathways and ownership of spaces without being institutional.

58



This double sink situated in the hallway outside bedrooms and bathrooms got both good and bad reviews; Moms liked its ability to facilitate supervision and free up the bathroom; some kids just thought it was weird to brush your teeth in the hall; tweens and adolescents in particular did not like doing any hygiene tasks with out privacy.

59



60

Comment
box
situated in
a relatively
private
space.



61



Kids get a kick out of bunk beds but some adults find them
difficult to access.

62



63

Storage

64



65



66

Cubbies near the front door for each child/family helped parents stay organized.





67



A resident offered this bed as an alternative to bunks, pointing out the space efficiency and the increase storage it would supply. The same resident pointed out the crowdedness of the room and the difficulty of sharing a room with another family as a single woman.

68