

Collaboration with Child Welfare

Session 1: Understanding the Child Welfare System

Carmen Hubbs-Archuleta County Victim Assistance Program

Megan Burch-Family Tree

Agenda

- Welcome!
- Overview of the Child Welfare Division
- Types of Child Welfare Responses
- Outline of Non-Court & Court Processes

State of Colorado Child Welfare Division

- State supervised, county administered system
- The mission of the Division of Child Welfare Services is to provide leadership, innovation, oversight, and resources to enhance the effective delivery of child welfare services statewide.
- This mission is guided through the principles of:
 - Collaboration
 - Accountability
 - Respect
 - Professionalism
 - Cultural Competence

The Division of Child Welfare Services consists of a group of services intended to protect children from harm and to assist families in caring for and protecting their children.

<http://www.colorado.gov/cs/Satellite/CDHS-ChildYouthFam/CBON/1251586904497>


What Governs CPS practice?

- **Colorado Children’s Code (Title 19)**
- **Volume VII (Rules and Regulations)**
- **Federal, State, and Court Oversight**

Mission of Child Welfare

Establish

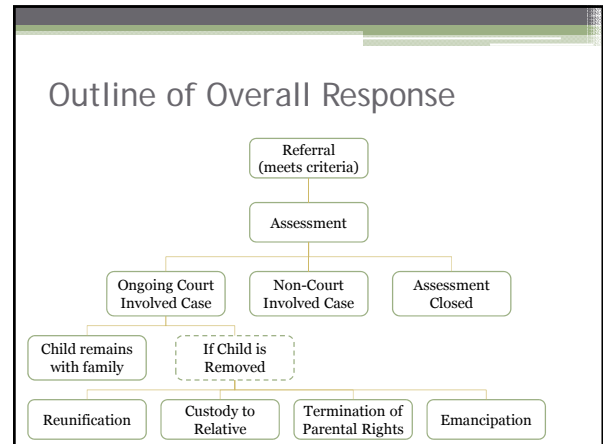
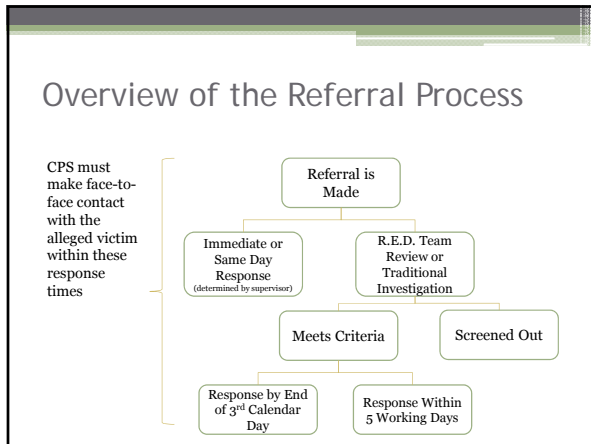
- 1) Safety
- 2) Permanence
- 3) Well-Being



Child Abuse and Neglect

“Abuse’ or ‘child abuse’... means an act or omission in one of the following categories that threatens the health or welfare of a child” (C.R.S. 19-1-103):

- Physical Abuse
- Sexual Abuse
- Neglect
- Emotional Abuse
- Child is found or resides where a controlled substance is manufactured
- Child tests positive at birth for controlled substances



The Assessment Process

- In counties that have implemented Differential Response, the assessment is assigned either Traditional Investigation/High Risk Assessment or Family Assessment Response
- In counties that have not yet implemented Differential Response, the assessment response is often referred to as a Traditional Investigation/High Risk Assessment

Types of Responses

Differential Response	Non-Differential Response Counties
<ul style="list-style-type: none"> Family Assessment Response Traditional/High Risk Assessment 	<ul style="list-style-type: none"> Traditional/High Risk Assessment

Differential Response

- Purpose: to promote child safety through early engagement with families in the child protection process.
- Began in 2010 with five counties [Arapahoe, Fremont, Garfield, Jefferson, Larimer]
 - Will be expanding to additional counties
- Creates a dual response assessment track
- Allows for a Family Assessment Response (FAR) in cases of **low or moderate risk**, as determined by identified criteria

http://www.colorado.gov/en/Satellite?blobcol=urldata&blobheadername1=Content-Disposition&blobheadername2=Content-Type&blobheadername3=inline%3D%3D&blobid=131922038_Pages_Sheet_2a.08.10.pdf&blobcol=urldata&blobheadername=application%2Fpdf&blobkey=y34&blobtable=Mungus&blobwhere=1231694130060&sbinary=true

Family Assessment Response

- No disposition (finding) or PRAN identified (person responsible for abuse or neglect) in FAR
- Contact with the family is typically made prior to making a home visit in FAR
- Family is interviewed together (with exceptions made for safety) in FAR
- FAR caseworkers have the ability to change to an investigation if risk is determined to be high

Family Assessment Response

- FAR determined by:
 - Lack of imminent danger
 - Level of risk is low to moderate
 - Number and nature of previous reports
 - Source of the report is credible
 - Type of alleged maltreatment
 - Vulnerability of the alleged victim

The Assessment Process

Determine safety/ potential risks for child through:

- ✓ Interviews and observation of child victim, siblings, and parents/caregivers
- ✓ Evaluation of child's home and environment
- ✓ Information gathered from collateral resources – teachers, other caregivers/family members, physicians, police, advocates

Goal is to engage families

- ✓ Focus on family strengths and resources
- ✓ Involve family in decision making

Assess for current and future needs

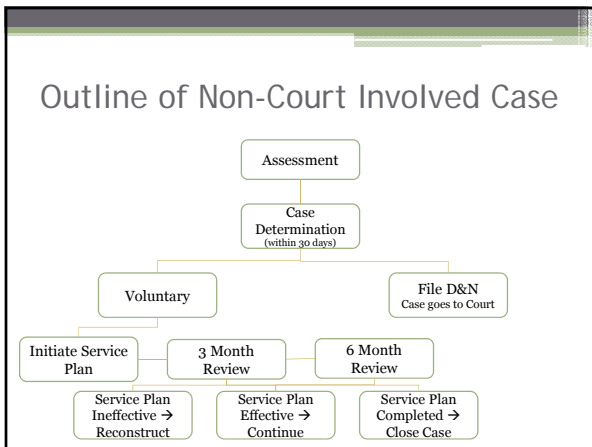
- ✓ Provide referrals to community resources
- ✓ Develop supports that increase child's safety and lessen risks

Assessment Determinations/Findings

- **Founded**-Established that an incident of abuse/neglect occurred by a preponderance of evidence
- **Inconclusive**-Established there was some likelihood (or reasonable suspicion) that abuse/neglect occurred, but couldn't obtain evidence necessary for a founded report
- **Unfounded**-Established there is clear evidence that no incident of abuse or neglect occurred

Outcomes of Assessment

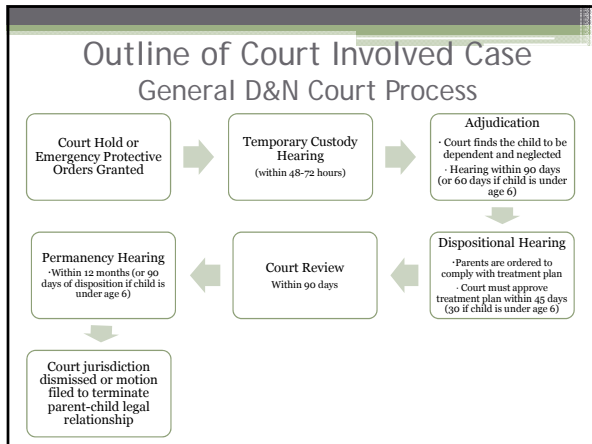
- Open Court-Involved Ongoing Services Case
 - Ongoing Child Protection
 - Sex Abuse
 - Family Integrated Treatment (FIT) Court
- Open Non-Court-Involved Ongoing Services Case
 - Early Intervention Services (EIS)
- Assessment Closed



Dependency & Neglect

A Dependency & Neglect Determination Requires:

- 1) Abandonment, Mistreatment, Abuse by parent/ guardian
- 2) Abandonment, Mistreatment or Abuse by another person and a parent/guardian does not take necessary steps to stop or prevent continued abuse
- 3) Child lacks proper care or lives in an unsafe environment
- 4) Neglect



- ### Next Training Opportunities
- **Session 2:** Overview of the Domestic Violence Practice Guide for Child Protection **Dec 6, noon - 1**
 - **Session 3-Part 1:** Creating a Framework for Collaboration **Jan 6, noon to 1:00**
 - **Session 3-Part 2:** Client and System Based Advocacy **Jan 8, noon to 1:00**

Questions or Comments?

Contact Information

<p>Carmen Hubbs Archuleta County Victim Assistance Program 970-264-9075 acvap@centurytel.net</p>	<p>Megan Burch Family Tree 303-271-4042 mburch@thefamilytree.org</p>
---	---